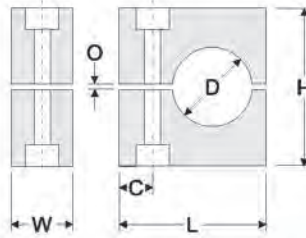


Standard Series Pipe Clamps

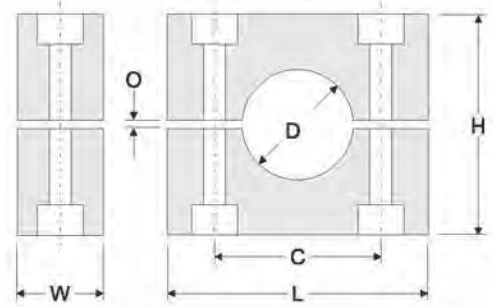
Behringer's clamp pairs are available in different materials and incorporate a modular insert by group size. Standard Series pipe clamps are available in sizes from 1/4 in. (6.35mm) through 4.5 in. (114mm) outside diameter sizes, and various materials such as polypropylene, Santoprene, and aluminum.



Group 0



Groups 1-7A



Clamp Pair Material Codes (*)

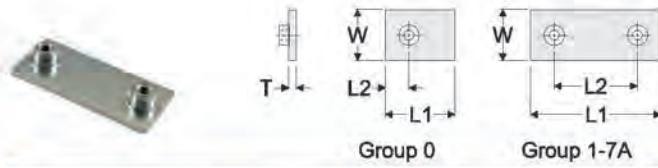
P	[PP] Polypropylene Black Color	S	[SP] Santoprene Beige Color	A	[AL] Aluminum Aluminum Color
----------	--	----------	---------------------------------------	----------	--

Clamp Pair Selection and Part Numbers

Behringer Group	Size	Metric OD (mm)	Imperial OD (Inch)	L	C	H	O	W	Weight Ea.	Ribbed Inside Clamp Pair (See material for *)
0	1/4 OD Tube	6.4	0.250	1.125 in. (28.6 mm)	0.375 in. (9.5 mm)	1.110 in. (28.2 mm)	0.031 in. (0.8 mm)	1.219 in. (31 mm)	0.02 lbs	ST-CLH-00- [*] -025
	3/8 OD Tube	9.5	0.375							ST-CLH-00- [*] -038
	1/8 OD Tube	10.0	0.405							ST-CLH-00- [*] -041
	1/2 OD Tube	12.7	0.500							ST-CLH-00- [*] -050
	5/8 OD Tube	16.0	0.625							ST-CLH-00- [*] -062
1	1/4 OD Tube	6.4	0.250	1.375 in. (35 mm)	0.790 in. (20 mm)	1.080 in. (27.4 mm)	0.031 in. (0.8 mm)	1.219 in. (31 mm)	0.03 lbs	ST-CLH-01- [*] -025
	8 mm OD	8.0	0.315							ST-CLH-01- [*] -032
	3/8 OD Tube	9.5	0.375							ST-CLH-01- [*] -038
	1/8 Pipe	10.0	0.405							ST-CLH-01- [*] -041
	12 mm	12.0	0.472							ST-CLH-01- [*] -047
2	3/8 OD Tube	9.5	0.375	1.625 in. (42 mm)	1.020 in. (26 mm)	1.280 in. (32.5 mm)	0.031 in. (0.8 mm)	1.219 in. (31 mm)	0.04 lbs	ST-CLH-02- [*] -038
	1/2 OD Tube	12.7	0.500							ST-CLH-02- [*] -050
	1/4 Pipe	13.7	0.540							ST-CLH-02- [*] -054
	15 mm	15.0	0.591							ST-CLH-02- [*] -059
	5/8 OD Tube	16.0	0.625							ST-CLH-02- [*] -062
3	3/8 Pipe	17.1	0.675	1.875 in. (48 mm)	1.300 in. (33 mm)	1.380 in. (35.1 mm)	0.031 in. (0.8 mm)	1.219 in. (31 mm)	0.05 lbs	ST-CLH-02- [*] -068
	3/8 OD Tube	9.5	0.375							ST-CLH-03- [*] -038
	18 mm	18.0	0.709							ST-CLH-03- [*] -070
	3/4 OD Tube	19.0	0.750							ST-CLH-03- [*] -075
	20 mm	20.0	0.790							ST-CLH-03- [*] -079
	1/2 Pipe	21.3	0.840							ST-CLH-03- [*] -084
4	7/8 OD Tube	22.2	0.875	2.250 in. (57 mm)	1.580 in. (40 mm)	1.625 in. (42 mm)	0.031 in. (0.8 mm)	1.219 in. (31 mm)	0.06 lbs	ST-CLH-03- [*] -087
	1 OD Tube	25.4	1.000							ST-CLH-03- [*] -100
	3/4 Pipe	26.7	1.050							ST-CLH-04- [*] -105
5	1 1/8 OD Tube	28.6	1.125	2.750 in. (70 mm)	2.050 in. (52 mm)	2.375 in. (60 mm)	0.031 in. (0.8 mm)	1.219 in. (31 mm)	0.11 lbs	ST-CLH-04- [*] -112
	1 1/4 OD Tube	32.0	1.250							ST-CLH-04- [*] -118
	1 Pipe	33.4	1.315							ST-CLH-05- [*] -113
	35 mm	35.0	1.378							ST-CLH-05- [*] -125
	1 1/2 OD Tube	38.1	1.500							ST-CLH-05- [*] -132
	40 mm	40.0	1.575							ST-CLH-05- [*] -138
	1 5/8 OD Tube	41.3	1.625							ST-CLH-05- [*] -150
1 1/4	42.2	1.660	ST-CLH-05- [*] -157							
6	1 3/4 OD Tube	44.5	1.750	3.375 in. (86 mm)	2.600 in. (66 mm)	2.625 in. (67 mm)	0.031 in. (0.8 mm)	1.219 in. (31 mm)	0.12 lbs	ST-CLH-05- [*] -163
	1 1/2 Pipe	48.3	1.900							ST-CLH-05- [*] -166
	2 OD Tube	50.8	2.000							ST-CLH-06- [*] -175
7	2 1/4 OD Tube	57.2	2.250	5.000 in. (127 mm)	4.250 in. (108 mm)	4.375 in. (111 mm)	0.031 in. (0.8 mm)	1.219 in. (31 mm)	0.41 lbs	ST-CLH-06- [*] -190
	2 Pipe	60.3	2.375							ST-CLH-06- [*] -200
	2 1/2 OD Tube	63.5	2.500							ST-CLH-07- [*] -225
	2 1/2 Pipe	73.0	2.875							ST-CLH-07- [*] -238
	3 OD Tube	76.2	3.000							ST-CLH-07- [*] -250
7A	3 Pipe	88.9	3.500	5.750 in. (146 mm)	4.948 in. (126 mm)	4.828 in. (123 mm)	0.031 in. (0.8 mm)	1.219 in. (31 mm)	0.39 lbs	ST-CLH-07- [*] -288
	4 OD Tube	102.0	4.000							ST-CLH-07- [*] -300
	4 Pipe	114.0	4.500							ST-CLH-07- [*] -350
										ST-CLH-7A- [*] -400
										ST-CLH-7A- [*] -450

Standard Series Pipe Clamps

Securing Plate Selection and Dimensions



Single Weld Plate [STW]							
Grp.	Order Number	L1	L2	W	T	Thread	Weight
0	ST-STW-00-*	1.188 in. (30 mm)	0.370 in. (9 mm)	1.223 in. (31 mm)	0.120 in. (3 mm)	1/4 - 20 UNC M6	0.06 lbs
1	ST-STW-01-*	1.510 in. (38 mm)	0.790 in. (20 mm)	1.223 in. (31 mm)	0.120 in. (3 mm)	1/4 - 20 UNC M6	0.07 lbs
2	ST-STW-02-*	1.740 in. (44 mm)	1.020 in. (26 mm)	1.223 in. (31 mm)	0.120 in. (3 mm)	1/4 - 20 UNC M6	0.08 lbs
3	ST-STW-03-*	2.020 in. (51 mm)	1.300 in. (33 mm)	1.223 in. (31 mm)	0.120 in. (3 mm)	1/4 - 20 UNC M6	0.10 lbs
4	ST-STW-04-*	2.300 in. (58 mm)	1.580 in. (40 mm)	1.223 in. (31 mm)	0.120 in. (3 mm)	1/4 - 20 UNC M6	0.11 lbs
5	ST-STW-05-*	2.770 in. (70 mm)	2.050 in. (52 mm)	1.223 in. (31 mm)	0.120 in. (3 mm)	1/4 - 20 UNC M6	0.13 lbs
6	ST-STW-06-*	3.320 in. (84 mm)	2.600 in. (66 mm)	1.223 in. (31 mm)	0.120 in. (3 mm)	1/4 - 20 UNC M6	0.15 lbs
7	ST-STW-07-*	5.02 in. (128 mm)	4.250 in. (108 mm)	1.223 in. (31 mm)	0.120 in. (3 mm)	1/4 - 20 UNC M6	0.21 lbs
7A	ST-STW-7A-*	5.776 in. (147 mm)	4.948 in. (126 mm)	1.223 in. (31 mm)	0.120 in. (3 mm)	1/4 - 20 UNC M6	0.27 lbs

*Materials: Z Zinc Plated Steel (Standard Material)
 T AISI 304 Grade Stainless Steel (A2 - 1.4301/1.4305)
 X AISI 316 Grade Stainless Steel (A4 - 1.4401/1.4571)
 C Unplated Carbon Steel (Standard Material)

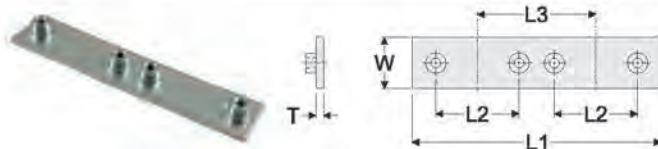
Threads: Omit As ordered above, the weld plates have standard UNC Thread
 -MET By adding the "-MET" designation after the material designation above, the threads are M6 Metric Thread



Base Plate [BAP]								
Grp.	Order Number	L1	L2	L3	W	T	Thread	Weight
0	ST-BAP-00-*	-	-	-	-	-	-	-
1	ST-BAP-01-*	3.000 in. (76 mm)	0.790 in. (20 mm)	2.295 in. (58 mm)	1.223 in. (31 mm)	0.120 in. (3 mm)	1/4 - 20 UNC M6	0.13 lbs
2	ST-BAP-02-*	3.302 in. (84 mm)	1.020 in. (26 mm)	2.550 in. (65 mm)	1.223 in. (31 mm)	0.120 in. (3 mm)	1/4 - 20 UNC M6	0.14 lbs
3	ST-BAP-03-*	3.500 in. (89 mm)	1.300 in. (33 mm)	2.825 in. (72 mm)	1.223 in. (31 mm)	0.120 in. (3 mm)	1/4 - 20 UNC M6	0.16 lbs
4	ST-BAP-04-*	3.813 in. (97 mm)	1.580 in. (40 mm)	3.085 in. (78 mm)	1.223 in. (31 mm)	0.120 in. (3 mm)	1/4 - 20 UNC M6	0.16 lbs
5	ST-BAP-05-*	4.250 in. (108 mm)	2.050 in. (52 mm)	3.500 in. (89 mm)	1.223 in. (31 mm)	0.120 in. (3 mm)	1/4 - 20 UNC M6	0.19 lbs
6	ST-BAP-06-*	4.875 in. (124 mm)	2.600 in. (66 mm)	4.125 in. (105 mm)	1.223 in. (31 mm)	0.120 in. (3 mm)	1/4 - 20 UNC M6	0.20 lbs
7	ST-BAP-07-*	6.500 in. (165 mm)	4.250 in. (108 mm)	5.750 in. (146 mm)	1.223 in. (31 mm)	0.120 in. (3 mm)	1/4 - 20 UNC M6	0.27 lbs
7A	ST-BAP-07A-*	7.240 in. (184 mm)	4.948 in. (126 mm)	6.450 in. (164 mm)	1.223 in. (31 mm)	0.120 in. (3 mm)	1/4 - 20 UNC M6	0.35 lbs

*Materials: Z Zinc Plated Steel (Standard Material)
 T AISI 304 Grade Stainless Steel (A2 - 1.4301/1.4305)
 X AISI 316 Grade Stainless Steel (A4 - 1.4401/1.4571)
 C Unplated Carbon Steel (Standard Material)

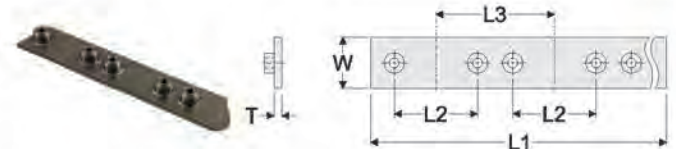
Threads: Omit As ordered above, the weld plates have standard UNC Thread
 -MET By adding the "-MET" designation after the material designation above, the threads are M6 Metric Thread



Double Weld Plate [DOW]								
Grp.	Order Number	L1	L2	L3	W	T	Thread	Weight
0	ST-DOW-00-*	-	-	-	-	-	-	-
1	ST-DOW-01-*	3.000 in. (76 mm)	0.790 in. (20 mm)	1.510 in. (38 mm)	1.223 in. (31 mm)	0.120 in. (3 mm)	1/4 - 20 UNC M6	0.16 lbs
2	ST-DOW-02-*	3.500 in. (89 mm)	1.020 in. (26 mm)	1.740 in. (44 mm)	1.223 in. (31 mm)	0.120 in. (3 mm)	1/4 - 20 UNC M6	0.17 lbs
3	ST-DOW-03-*	4.000 in. (102 mm)	1.300 in. (33 mm)	2.020 in. (51 mm)	1.223 in. (31 mm)	0.120 in. (3 mm)	1/4 - 20 UNC M6	0.19 lbs
4	ST-DOW-04-*	4.600 in. (119 mm)	1.580 in. (40 mm)	2.300 in. (58 mm)	1.223 in. (31 mm)	0.120 in. (3 mm)	1/4 - 20 UNC M6	0.24 lbs
5	ST-DOW-05-*	5.630 in. (143 mm)	2.050 in. (52 mm)	2.770 in. (70 mm)	1.223 in. (31 mm)	0.120 in. (3 mm)	1/4 - 20 UNC M6	0.26 lbs
6	ST-DOW-06-*	6.880 in. (175 mm)	2.600 in. (66 mm)	3.320 in. (84 mm)	1.223 in. (31 mm)	0.120 in. (3 mm)	1/4 - 20 UNC M6	0.30 lbs
7	ST-DOW-07-*	10.220 in. (260 mm)	4.250 in. (108 mm)	5.145 in. (131 mm)	1.223 in. (31 mm)	0.120 in. (3 mm)	1/4 - 20 UNC M6	0.45 lbs
7A	ST-DOW-07A-*	11.690 in. (297 mm)	4.948 in. (126 mm)	5.688 in. (144 mm)	1.223 in. (31 mm)	0.120 in. (3 mm)	1/4 - 20 UNC M6	0.56 lbs

*Materials: Z Zinc Plated Steel (Standard Material)
 T AISI 304 Grade Stainless Steel (A2 - 1.4301/1.4305)
 X AISI 316 Grade Stainless Steel (A4 - 1.4401/1.4571)
 C Unplated Carbon Steel (Standard Material)

Threads: Omit As ordered above, the weld plates have standard UNC Thread
 -MET By adding the "-MET" designation after the material designation above, the threads are M6 Metric Thread



Group Weld Plate [GRW]							
Grp.	Order Number	L1	L2	L3	W	T	Thread
0	N/A	-	-	-	-	-	-
1	ST-GRW-01-XXX	C/F	0.790 in. (20 mm)	1.510 in. (38 mm)	1.223 in. (31 mm)	0.120 in. (3 mm)	1/4 - 20 UNC M6
2	ST-GRW-02-XXX	C/F	1.02 in. (26 mm)	1.740 in. (44 mm)	1.223 in. (31 mm)	0.120 in. (3 mm)	1/4 - 20 UNC M6
3	ST-GRW-03-XXX	C/F	1.300 in. (33 mm)	2.020 in. (51 mm)	1.223 in. (31 mm)	0.120 in. (3 mm)	1/4 - 20 UNC M6
4	ST-GRW-04-XXX	C/F	1.580 in. (40 mm)	2.300 in. (58 mm)	1.223 in. (31 mm)	0.120 in. (3 mm)	1/4 - 20 UNC M6
5	ST-GRW-05-XXX	C/F	2.050 in. (52 mm)	2.770 in. (70 mm)	1.223 in. (31 mm)	0.120 in. (3 mm)	1/4 - 20 UNC M6
6	ST-GRW-06-XXX	C/F	2.600 in. (66 mm)	3.320 in. (84 mm)	1.223 in. (31 mm)	0.120 in. (3 mm)	1/4 - 20 UNC M6
7	ST-GRW-07-XXX	C/F	4.250 in. (108 mm)	5.145 in. (131 mm)	1.223 in. (31 mm)	0.120 in. (3 mm)	1/4 - 20 UNC M6
7A	ST-GRW-7A-XXX	C/F	4.948 in. (126 mm)	5.688 in. (144 mm)	1.223 in. (31 mm)	0.120 in. (3 mm)	1/4 - 20 UNC M6

*Materials: C Unplated Carbon Steel (Standard Material)
 T AISI 304 Grade Stainless Steel (A2 - 1.4301/1.4305)
 X AISI 316 Grade Stainless Steel (A4 - 1.4401/1.4571)
 Z Zinc Plated Steel

Threads: Omit As ordered above, the weld plates have standard UNC Thread
 -MET By adding the "-MET" designation after the material designation above, the threads are M6 Metric Thread

XXX Number of positions (ex. 005)

Standard Series Pipe Clamps

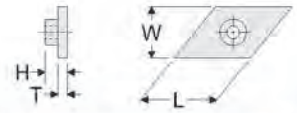
Rail Mounting Selection and Dimensions



Rail Nut [RCN-0 / MRN-0]						
Grp.	Order Number	L	W	T	H	Thread Weight Ea.
0-7A	ST-RCN-99- ^a -RN0	0.950 in. (24 mm)	0.405 in. (10.4 mm)	0.190 in. (5 mm)	0.570 in. (14.5 mm)	1/4-20 UNC 0.02 lbs
0-7A	ST-MRN-99- ^a -RN0	0.950 in. (24 mm)	0.405 in. (10.4 mm)	0.190 in. (5 mm)	0.570 in. (14.5 mm)	M6 0.02 lbs

***Materials:**

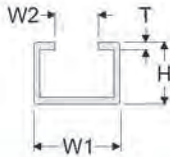
- Z Zinc Plated Steel (Standard Material)
- T AISI 304 Grade Stainless Steel (A2 - 1.4301/1.4305)
- X AISI 316 Grade Stainless Steel (A4 - 1.4401/1.4571)
- C Unplated Carbon Steel (Special Material)



Rail Nut [RCN-1 / MRN-1]						
Grp.	Order Number	L	W	T	H	Thread Weight Ea.
0-7A	ST-RCN-99- ^a -RN1	1.075 in. (27 mm)	0.783 in. (20 mm)	0.175 in. (4 mm)	0.405 in. (10 mm)	1/4-20 UNC 0.04 lbs
0-7A	ST-MRN-99- ^a -RN1	1.075 in. (27 mm)	0.783 in. (20 mm)	0.175 in. (4 mm)	0.405 in. (10 mm)	M6 0.04 lbs

***Materials:**

- Z Zinc Plated Steel (Standard Material)
- T AISI 304 Grade Stainless Steel (A2 - 1.4301/1.4305)
- X AISI 316 Grade Stainless Steel (A4 - 1.4401/1.4571)
- C Unplated Carbon Steel (Special Material)

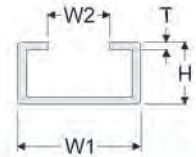


Mounting Rail [RAL-0]						
Grp.	Order Number	W1	W2	T	H	Length Weight
0-7A	ST-RA0-99- ^a -XXX	1.125 in. (28 mm)	0.438 in. (11 mm)	14 gauge	0.438 in. (11 mm)	6FT 3.94 lbs 3FT 1.97 lbs

***Materials:**

- C Unplated Carbon Steel (Standard Material)
- T AISI 304 Grade Stainless Steel (A2 - 1.4301/1.4305)
- X AISI 316 Grade Stainless Steel (A4 - 1.4401/1.4571)
- Z Zinc Plated Steel

XXX Length: 6FT 72 in. (1829 mm) length (Standard Length)
3FT 36 in. (914 mm) length (special Length)

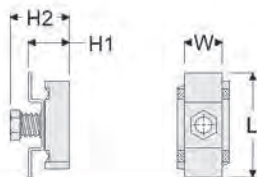


Mounting Rail [RAL-1]						
Grp.	Order Number	W1	W2	T	H	Length Weight
0-7A	ST-RA1-99- ^a -XXX	1.438 in. (36.5 mm)	0.625 in. (16 mm)	14 gauge	0.438 in. (11 mm)	6FT 4.65 lbs 3FT 2.33 lbs

***Materials:**

- Z Zinc Plated Steel (Standard Material)
- T AISI 304 Grade Stainless Steel (A2 - 1.4301/1.4305)
- X AISI 316 Grade Stainless Steel (A4 - 1.4401/1.4571)
- C Unplated Carbon Steel

XXX Length: 6FT 72 in. (1829 mm) length (Standard Length)
3FT 36 in. (914 mm) length (special Length)



Strut Clip Nut [UCN]						
Grp.	Order Number	L	W	H1	H2	Thread Weight Ea.
0-7A	ST-UCN-99- ^a -N	1.600 in. (41 mm)	0.640 in. (16 mm)	0.525 in. (13 mm)	0.813 in. (21 mm)	1/4-20 UNC 0.10 lbs

***Materials:**

- Z Zinc Plated Steel (Standard Material)
- T AISI 304 Grade Stainless Steel (A2 - 1.4301/1.4305)
- X AISI 316 Grade Stainless Steel (A4 - 1.4401/1.4571)
- C Unplated Carbon Steel (Special Material)



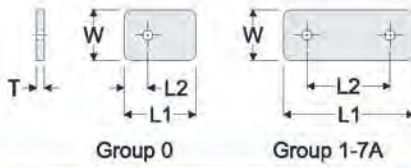
Cover Washer [COW]				
Grp.	Order Number	ØD1	ØD2	T Weight Ea.
0-7A	ST-COW-99- ^a	0.630 in. (16mm)	0.265 in. (7mm)	0.117 in. (3 mm) 0.01 lbs

***Materials:**

- Z Zinc Plated Steel (Standard Material)
- T AISI 304 Grade Stainless Steel (A2 - 1.4301/1.4305)
- X AISI 316 Grade Stainless Steel (A4 - 1.4401/1.4571)
- C Unplated Carbon Steel (Special Material)

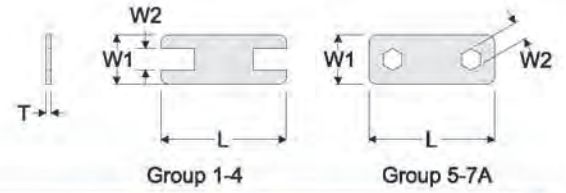
Standard Series Pipe Clamps

Fastening Hardware Selection and Dimensions



Cover Plate [COP]						
Grp.	Order Number	L1	L2	W	T	Weight Ea.
0	ST-COP-00-*	1.094 in. (28 mm)	0.370 in. (9 mm)	1.223 in. (31mm)	0.120 in. (3 mm)	0.04 lbs
1	ST-COP-01-*	1.362 in. (36 mm)	0.790 in. (20 mm)	1.223 in. (31mm)	0.120 in. (3 mm)	0.05 lbs
2	ST-COP-02-*	1.592 in. (40 mm)	1.020 in. (26 mm)	1.223 in. (31mm)	0.120 in. (3 mm)	0.06 lbs
3	ST-COP-03-*	1.872 in. (48 mm)	1.300 in. (33 mm)	1.223 in. (31mm)	0.120 in. (3 mm)	0.07 lbs
4	ST-COP-04-*	2.152 in. (55 mm)	1.580 in. (40 mm)	1.223 in. (31mm)	0.120 in. (3 mm)	0.08 lbs
5	ST-COP-05-*	2.790 in. (71 mm)	2.050 in. (52 mm)	1.223 in. (31mm)	0.120 in. (3 mm)	0.10 lbs
6	ST-COP-06-*	3.340 in. (85 mm)	2.600 in. (66 mm)	1.223 in. (31mm)	0.120 in. (3 mm)	0.15 lbs
7	ST-COP-07-*	5.020 in. (128 mm)	4.250 in. (108 mm)	1.223 in. (31mm)	0.120 in. (3 mm)	0.18 lbs
7A	ST-COP-7A-*	5.778 in. (147 mm)	4.948 in. (126 mm)	1.223 in. (31mm)	0.120 in. (3 mm)	0.27 lbs

*Materials: Z Zinc Plated Steel (Standard Material)
T AISI 304 Grade Stainless Steel (A2 - 1.4301/1.4305)
X AISI 316 Grade Stainless Steel (A4 - 1.4401/1.4571)



Safety Plate [SAF]						
Grp.	Order Number	L	W1	W2	T	Weight Ea.
0	N/A	-	-	-	-	-
1	ST-SAF-01-*	1.330 in. (34 mm)	1.125 in. (29 mm)	0.440 in. (11.2 mm)	0.045 in. (1 mm)	0.05 lbs
2	ST-SAF-02-*	1.560 in. (40 mm)	1.125 in. (29 mm)	0.440 in. (11.2 mm)	0.045 in. (1 mm)	0.06 lbs
3	ST-SAF-03-*	1.872 in. (48 mm)	1.125 in. (29 mm)	0.440 in. (11.2 mm)	0.045 in. (1 mm)	0.07 lbs
4	ST-SAF-04-*	2.120 in. (54 mm)	1.125 in. (29 mm)	0.440 in. (11.2 mm)	0.045 in. (1 mm)	0.08 lbs
5	ST-SAF-05-*	2.760 in. (70 mm)	1.125 in. (29 mm)	0.460 in. (11.7 mm)	0.045 in. (1 mm)	0.10 lbs
6	ST-SAF-06-*	3.340 in. (85 mm)	1.125 in. (29 mm)	0.460 in. (11.7 mm)	0.045 in. (1 mm)	0.15 lbs
7	ST-SAF-07-*	5.020 in. (128 mm)	1.125 in. (29 mm)	0.460 in. (11.7 mm)	0.045 in. (1 mm)	0.18 lbs
7A	C/F	-	-	-	-	-

*Materials: Z Zinc Plated Steel (Standard Material)
T AISI 304 Grade Stainless Steel (A2 - 1.4301/1.4305)
X AISI 316 Grade Stainless Steel (A4 - 1.4401/1.4571)
C Unplated Carbon Steel (Special Material)

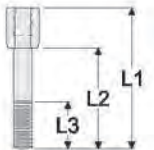
* Consult Factory



Hexagon Head Bolt [HEX]				
Grp.	Order Number	L	Thread	Weight Ea.
0	ST-HEX-01-*	1.250 in. (30 mm)	1/4 - 20 UNC M6	0.02 lbs
1	ST-HEX-01-*	1.250 in. (30 mm)	1/4 - 20 UNC M6	0.02 lbs
2	ST-HEX-02-*	1.500 in. (35 mm)	1/4 - 20 UNC M6	0.02 lbs
3	ST-HEX-03-*	1.500 in. (35 mm)	1/4 - 20 UNC M6	0.02 lbs
4	ST-HEX-04-*	1.750 in. (45 mm)	1/4 - 20 UNC M6	0.03 lbs
5	ST-HEX-05-*	2.500 in. (65 mm)	1/4 - 20 UNC M6	0.04 lbs
6	ST-HEX-06-*	2.750 in. (70 mm)	1/4 - 20 UNC M6	0.04 lbs
7	ST-HEX-07-*	4.500 in. (114 mm)	1/4 - 20 UNC M6	0.06 lbs
7A	ST-HEX-7A-*	5.000 in. (127 mm)	1/4 - 20 UNC M6	0.06 lbs

*Materials: Z Zinc Plated Steel (Standard Material)
T AISI 304 Grade Stainless Steel (A2 - 1.4301/1.4305)
X AISI 316 Grade Stainless Steel (A4 - 1.4401/1.4571)

Threads: Omit As ordered above, the weld plates have standard 1/4 - 20 UNC Thread
-MET By adding the "-MET" designation after the material designation above, the threads are M6 Metric Thread.



Stacking Bolt [STB]						
Grp.	Order Number	L1	L2	L3	Thread	Weight Ea.
0	ST-STB-00-*	1.438 in. (36.5 mm)	0.813 in. (21 mm)	0.75 in. (19 mm)	1/4 - 20 UNC M6	0.03 lbs.
1	ST-STB-00-*	1.438 in. (36.5 mm)	0.813 in. (21 mm)	0.75 in. (19 mm)	1/4 - 20 UNC M6	0.03 lbs.
2	ST-STB-02-*	1.688 in. (43 mm)	1.063 in. (27 mm)	0.75 in. (19 mm)	1/4 - 20 UNC M6	0.04 lbs.
3	ST-STB-02-*	1.688 in. (43 mm)	1.063 in. (27 mm)	0.75 in. (19 mm)	1/4 - 20 UNC M6	0.04 lbs.
4	ST-STB-04-*	1.938 in. (49 mm)	1.313 in. (33 mm)	0.75 in. (19 mm)	1/4 - 20 UNC M6	0.04 lbs.
5	ST-STB-05-*	2.688 in. (68 mm)	2.063 in. (52 mm)	0.75 in. (19 mm)	1/4 - 20 UNC M6	0.05 lbs.
6	ST-STB-06-*	2.938 in. (75 mm)	2.313 in. (59 mm)	0.75 in. (19 mm)	1/4 - 20 UNC M6	0.05 lbs.
7	ST-STB-07-*	4.688 in. (119 mm)	4.063 in. (103 mm)	0.75 in. (19 mm)	1/4 - 20 UNC M6	0.08 lbs.
7A	C/F	-	-	-	-	-

*Materials: Z Zinc Plated Steel (Standard Material)
T AISI 304 Grade Stainless Steel (A2 - 1.4301/1.4305)
X AISI 316 Grade Stainless Steel (A4 - 1.4401/1.4571)
C Unplated Carbon Steel (Special Material)

Threads: omit As ordered above, the weld plates have standard 1/4 - 20 UNC thread
-MET By adding the "-MET" designation after the material designation above, the threads are M6 metric thread

* Consult Factory

Standard Series Pipe Clamps

Complete Assembly Ordering Code

chart 1 chart 2 chart 3 chart 4 chart 5
S T 41050-PP-MET

Clamp Configuration chart 1

S	Complete Clamp for Weld Mounting
BS	Complete Clamp for Bolt Mounting
DS	Complete Double Clamp for Weld Mounting
R0S	Complete Clamp for mounting to RAL-0
R1S	Complete Clamp for mounting to RAL-1
US	Complete Clamp for mounting to Strut Channel
G*S	Complete Clamp for Group Weld Plate Mounting
SSK	Stacking Kit

Hardware Material chart 2

Omit	Electro-Zinc Dichromate Plating
T	AISI 304 Stainless Steel (A2 - 1.4301/1.4305)
X	AISI 316/316Ti Stainless Steel (A4 - 1.4401/1.4571)

Clamp Pair Material chart 4

PP	Polypropylene
SP	Santoprene (not available in group 0)
AL	Aluminum (not available in groups 0, 7, or 7A)

Threads chart 5

Omit	UNC Thread (Standard)
MET	Metric Thread

Clamp Group and Size chart 3

Behringer Group	Pipe Size	Tube Size	Metric ØD (mm)	Imperial ØD (inch)	Order No.
0	1/8	1/4	6.40	0.250	0025
		3/8	9.50	0.375	0038
		1/2	12.70	0.500	0050
		5/8	16.00	0.625	0062
		1/4	6.40	0.250	1025
1	1/8	3/8	9.50	0.375	1038
		1/2	12.70	0.500	1050
		5/8	16.00	0.625	1062
		1	25.40	1.000	1100
2	3/8	1/2	12.70	0.500	2050
		3/4	19.00	0.750	2075
		1	25.40	1.000	2100
		1 1/8	28.30	1.125	2112
		1 1/4	32.00	1.250	2125
		1 1/2	38.10	1.500	2150
3	1/2	3/4	19.00	0.750	3075
		1	25.40	1.000	3100
		1 1/8	28.30	1.125	3112
		1 1/4	32.00	1.250	3125
		1 1/2	38.10	1.500	3150
		1 3/4	44.50	1.750	3175
		2	50.80	2.000	3200
		2 1/4	57.20	2.250	3225
4	3/4	1	25.40	1.000	4100
		1 1/8	28.30	1.125	4112
		1 1/4	32.00	1.250	4125
		1 1/2	38.10	1.500	4150
		1 3/4	44.50	1.750	4175
5	1	1 1/8	28.30	1.125	5112
		1 1/4	32.00	1.250	5125
		1 1/2	38.10	1.500	5150
		1 3/4	44.50	1.750	5175
		2	50.80	2.000	5200
		2 1/4	57.20	2.250	5225
		2 1/2	63.50	2.500	5250
6	2	2 1/2	63.50	2.500	6250
		2 3/4	70.00	2.750	6275
		3	76.20	3.000	6300
		3 1/2	88.90	3.500	6350
		4	102.00	4.000	6400
7A	4	4 1/2	114.30	4.500	7A450

Standard Series Pipe Clamps

Ordering Examples

Single Clamp for Weld Mounting

S



Consists of:
2 HEX bolts
1 COP Cover Plate
1 CLH Clamp Set (2 halves)
1 STW Weld Plate

Double Clamp for Weld Mounting


DS



Consists of:
4 HEX bolts
2 COP Cover Plates
2 CLH Clamp Sets (4 halves)
1 DOW Weld Plate

Clamp for Bolt Mounting

BS



Consists of:
2 HEX bolts
1 COP Cover Plate
1 CLH Clamp Set (2 halves)
1 BAP Base Plate

Stacking Kit

SSK



Consists of:
2 STB Stacking Bolts
1 SAF Safety Plate
1 CLH Clamp Sets (2 halves)

Clamp for RAL-0 Mounting

R0S



Consists of:
2 HEX bolts
1 COP Cover Plate
1 CLH Clamp Set (2 halves)
2 RCN-0 Rail Nuts

Clamp for RAL-1 Mounting


R1S



Consists of:
2 HEX bolts
1 COP Cover Plate
1 CLH Clamp Set (2 halves)
2 RCN-1 Rail Nuts

Clamp for Strut Mounting


US



Consists of:
2 HEX bolts
1 COP Cover Plate
1 CLH Clamp Set (2 halves)
2 UCN Strut Clip Nuts

Clamp for Group Weld Mounting

G*S

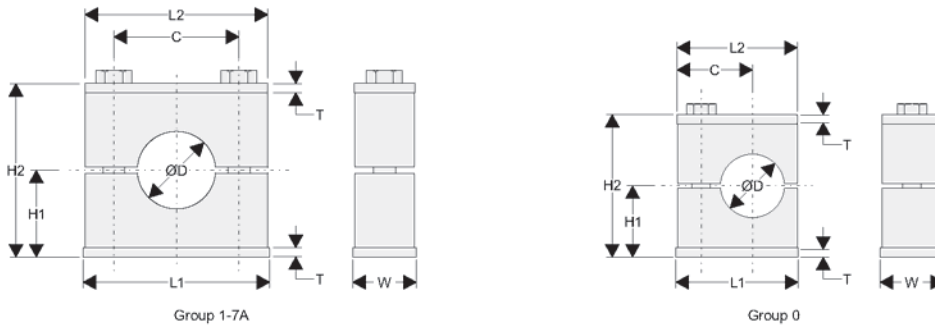


Consists of:
2 HEX bolts per position
1 COP cover plate per position
1 CLH clamp set per position
1 GRW group weld plate
Standard material for GRW is un-plated steel.

* is the number of positions
Example: Group 2, 5 positions of 1/2" tube
PP clamps, 304SS = G5ST2050-PP

Material Properties Technical Data				
Clamp Pair Material Other materials have been used and are available upon request.	PP	SP	AL	NN
	Polypropylene	Santoprene	Aluminum	HDPE
Color	Black	Tan	Natural Aluminum	White
Description	Thermoplastic Copolymer	Thermoplastic Elastomer	AlSi12	High Density Polyethylene
Mechanical Properties				
Tensile Strength	3300 psi (at yield, 73 ° F) (ASTM D638)	1740 psi (at yield, 73 ° F) (ASTM D638)	19,000 psi (at yield, 73 ° F) (ASTM D638)	4500 psi (at yield, 73 ° F) (ASTM D638)
Tensile Elongation	6.6% (at yield, 73 ° F) (ASTM D638)	31% (at yield, 73 ° F) (ASTM D638)	3.5% (at yield, 73 ° F) (ASTM D638)	
Hardness		50 Shore D (ASTM D2240)		65 R (Rockwell "R" Scale)
Thermal Properties				
Temperature Range (Brief Exposure)	-22° F to + 215° F (-30° C to + 102° C)	-40° F to + 302° F (-40° C to + 150° C)	-65° F to + 750° F*1 (-54° C to + 399° C)	
Temperature Range (Continuous Exposure)	-22° F to + 194° F (-30° C to + 90° C)	-40° F to + 275° F (-40° C to + 135° C)	-65° F to + 500° F*1 (-54° C to + 260° C)	-58° F to + 175° F (-50° C to + 79° C)
Electrical Properties				
Dielectric Strength	475 V/mil (ASTM D149)	920 V/mil (ASTM D149)		510 V/mil (ASTM D149)
Dielectric Constant	2.26 - 2.36 (ASTM D150)	2.300 (ASTM D150)		2.35 (ASTM D150)
Volume Resistivity	> 2 x 10 ¹⁶ ohm-cm (ASTM D257)	>1 x 10 ¹⁴ ohm-cm (ASTM D257)	4.4 x 10 ⁶ ohm-cm (ASTM D257)	>6 x 10 ¹⁵ ohm-cm (ASTM D257)
Standards and Specifications				
	FDA Regulation Title 21 CFR 177.1520	UL Listed File# QMFZ2.E80017		FDA Regulation Title 21 CFR 177.1520
	Meets Multiple Automotive Industry Specifications	Meets Multiple Automotive Industry Specifications		ASTM D 1248-84 Type III, Class A
	EU Directive 2002/95/EC (RoHS) Compliant	EU Directive 2002/95/EC (RoHS) Compliant		Federal Specification LP-390 Type III, Class H, Grade I
Special Notes				
Notes:	*1: Tensile and fatigue strength rise as temperature decreases. The tensile elongation decreases as the temperature decreases.			
	The information contained in this document is provided as an aid in properly selecting products and/or options. It is intended to be used by technically experienced users for general reference only. The supplier assumes no responsibility or liability for the accuracy or completeness of this document, as well as results obtained by the use of this information. Due to the variety of possible operating conditions, it is highly recommended that the user make their own tests to determine the safety and suitability of all products and combinations thereof. The user is solely responsible for final determination of such conditions.			

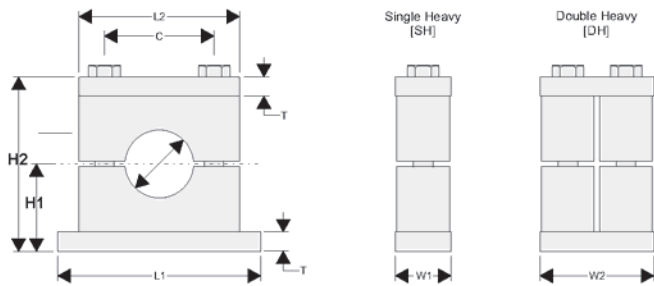
Standard Series Complete Assembly Dimensions



Clamp Assembly Dimensions

Behringer Group	OD	L1	L2	C	H1	H2	T	W
0	See ordering code on page 6 for available diameters.	1.188 (30.2)	1.094 (27.8)	0.420 (10.7)	0.675 (17.1)	1.350 (34.3)	0.120 (3)	1.223 (31)
1		1.510 (38.4)	1.362 (34.6)	0.790 (20.1)	0.660 (16.8)	1.320 (33.5)	0.120 (3)	1.223 (31)
2		1.740 (44.2)	1.592 (40.4)	1.020 (25.9)	0.760 (19.3)	1.520 (38.6)	0.120 (3)	1.223 (31)
3		2.020 (51.3)	1.872 (47.5)	1.300 (33)	0.810 (20.6)	1.620 (41.1)	0.120 (3)	1.223 (31)
4		2.300 (58.4)	2.152 (54.7)	1.580 (40.1)	0.938 (23.8)	1.875 (47.6)	0.120 (3)	1.223 (31)
5		2.770 (70.4)	2.790 (70.9)	2.050 (52.1)	1.313 (33.3)	2.625 (66.7)	0.120 (3)	1.223 (31)
6		3.320 (84.3)	3.340 (84.8)	2.600 (66)	1.438 (36.5)	2.875 (73)	0.120 (3)	1.223 (31)
7		5.020 (127.5)	5.020 (127.5)	4.250 (108)	2.313 (58.7)	4.625 (117.5)	0.120 (3)	1.223 (31)
7A		5.776 (146.7)	5.776 (146.7)	4.948 (125.7)	2.539 in(64.5)	5.078 (129)	0.120 (3)	1.223 (31)

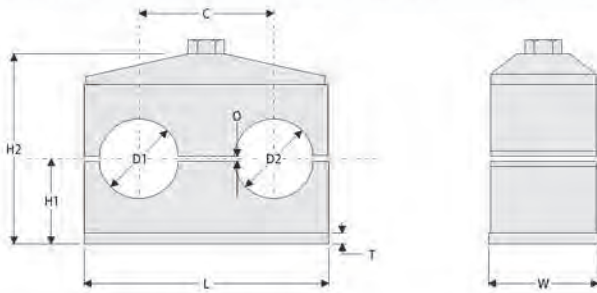
Heavy Series Complete Assembly Dimensions



Clamp Assembly Dimensions

Behringer Group	OD	L1	L2	C	H1	H2	T	W1	W2
H3	See ordering code on page 12 for available diameters.	2.875 (73)	2.250 in(57)	1.300 (33)	1.000 (25.4)	2.000 (50.8)	0.313 (8)	1.250 (32)	2.500 (63.5)
H4		3.375 (86)	2.750 (70)	1.770 (45)	1.250 (32)	2.500 (63.5)	0.313 (8)	1.250 (32)	2.500 (63.5)
H5		4.000 (102)	3.344 (85)	2.360 (60)	1.500 (38)	3.000 (76.2)	0.313 (8)	1.250 (32)	2.500 (63.5)
H6		5.875 (149)	4.500 (114)	3.530 (90)	2.125 (54)	4.250 (108)	0.375 (10)	1.750 (44.5)	3.500 (88.9)
H7		7.375 (187)	6.000 (152)	4.810 (122)	2.750 (70)	5.500 (140)	0.375 (10)	2.250 (57.2)	4.500 (114)
H8		10.000 (254)	8.063 (205)	6.620 (168)	3.813 (97)	7.625 (194)	0.500 (13)	3.000 (76.2)	7.000 (178)
H9		11.750 (298)	9.750 (248)	8.060 (205)	4.438 (113)	8.875 (225)	0.500 (13)	3.500 (88.9)	7.000 (178)
H10		14.500 (368)	12.500 (318)	10.430 (265)	6.063 (154)	12.125 (308)	0.750 (19)	4.500 (114)	9.375 (238)

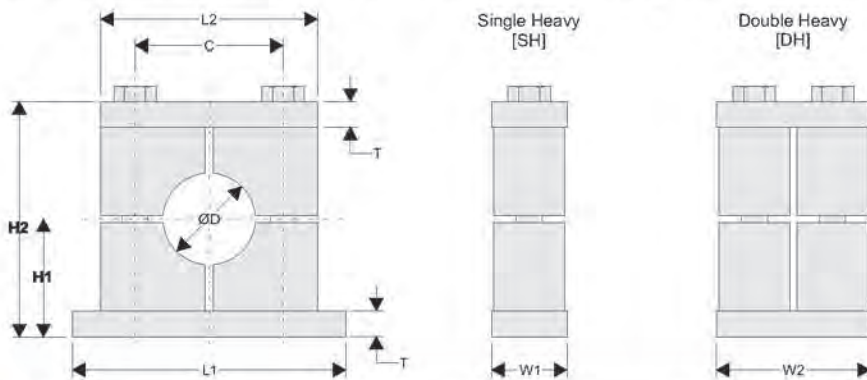
Twin Series Complete Assembly Dimensions



Clamp Assembly Dimensions

Behringer Group	D1/D2	L	C	H1	H2	T	W	O
T1	See Ordering code on page 18 for available dimensions	1.625 (41.3)	0.787 (20)	0.563 (14.3)	1.235 (31.4)	0.188 (5)	1.20 (30.5)	0.063 (1.6)
T2		2.188 (56)	1.142 (29)	0.688 (17.5)	1.454 (37)	0.188 (5)	1.20 (30.5)	0.063 (1.6)
T3		2.688 (68.3)	1.417 (36)	0.938 (23.8)	1.954 (49.6)	0.188 (5)	1.20 (30.5)	0.063 (1.6)
T4		3.445 (87.5)	1.772 (45)	1.063 (27)	2.204 (56)	0.188 (5)	1.20 (30.5)	0.063 (1.6)
T5		4.315 (110)	2.205 (56)	1.313 (33.3)	2.704 (68.7)	0.188 (5)	1.20 (30.5)	0.063 (1.6)

Heavy-4 Series Complete Assembly Dimensions

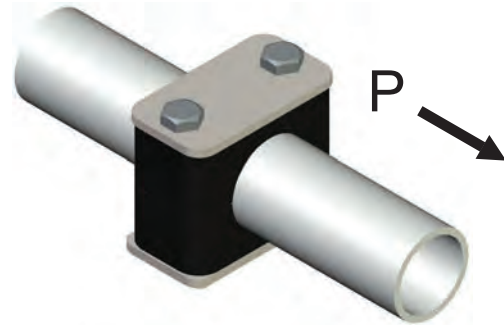


Clamp Assembly Dimensions

Behringer Group	OD	L1	L2	C	H1	H2	T	W1	W2
H11	See ordering code on page 25 for available diameters.	20.000 (508)	18.250 (464)	15.688 (398)	9.000 (229)	18.000 (457)	1.000 (25.4)	5.875 (149)	11.750 (298)
H12		25.000 (635)	23.500 (597)	20.875 (530)	11.000 (279)	22.000 (559)	1.000 (25.4)	5.875 (149)	11.750 (298)
H13		26.500 (673)	24.750 (629)	22.250 (565)	12.000 (305)	24.000 (610)	1.000 (25.4)	5.875 (149)	11.750 (298)
H14		30.000 (762)	28.750 (730)	26.250 (667)	12.000 (305)	24.000 (610)	1.000 (25.4)	5.875 (149)	11.750 (298)
H15		36.000 (914)	34.750 (883)	32.250 (819)	17.000 (432)	34.000 (864)	1.000 (25.4)	5.875 (149)	11.750 (298)

Tightening Torques and Maximum Loads

The charts below show the force in the direction of the pipe [P] required to move the pipe through the clamp. The values are for clamps with cover plates and hexagon head bolts using the recommended tightening torques below.



Standard Series

Behringer Group	Hexagon Head Bolt	Polypropylene		Santoprene		Aluminum	
		Tightening Torque (Ft-lbs.)	Maximum load (lbs.) in pipe direction (P)	Tightening Torque (Ft-lbs.)	Maximum load (lbs.) in pipe direction (P)	Tightening Torque (Ft-lbs.)	Maximum load (lbs.) in pipe direction (P)
0	1/4 - 20 UNC	6	135	6	135	9	785
1		6	245	6	225	9	945
2		6	290	6	270	9	965
3		6	315	6	290	9	1100
4		6	335	6	315	9	1125
5		6	425	6	380	9	1600
6		6	450	6	405	9	2000
7		6	495	6	425	9	N/A
7A		6		6		9	N/A

Heavy Series

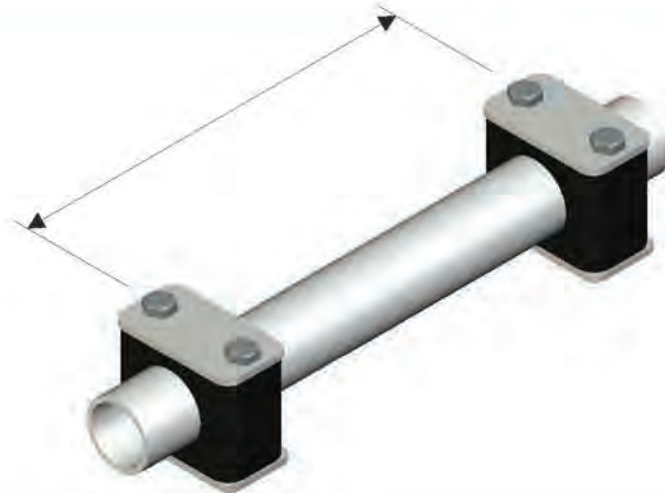
Behringer Group	Hexagon Head Bolt	Polypropylene		Santoprene		Aluminum	
		Tightening Torque (Ft-lbs.)	Maximum load (lbs.) in pipe direction (P)	Tightening Torque (Ft-lbs.)	Maximum load (lbs.) in pipe direction (P)	Tightening Torque (Ft-lbs.)	Maximum load (lbs.) in pipe direction (P)
H3	3/8 - 16 UNC	9	360	9	335	22	2720
H4		9	650	9	600	22	3395
H5		11	740	11	675	25	3485
H6	7/16 - 14 UNC	22	1845	22	1755	40	6615
H7	5/8 - 11 UNC	33	2475	33	2025	90	7850
H8	3/4 - 10 UNC	60	3150	60	2700	160	15,885
H9	7/8 - 9 UNC	80	6300	80	5625	180	16,875
H10	1 1/8 - 7 UNC	130	9000	130	7650	370	19,000

Twin Series

Behringer Group	Hexagon Head Bolt	Polypropylene		Santoprene	
		Tightening Torque (Ft-lbs.)	Maximum load (lbs.) in pipe direction (P)	Tightening Torque (Ft-lbs.)	Maximum load (lbs.) in pipe direction (P)
T1	1/4 - 20 UNC	4	100	4	100
T2	5/16 - 18 UNC	9	235	9	235
T3		9	235	9	235
T4		9	300	12	300
T5		6	300	6	300

Note: All tightening torques and static shearing forces apply to clamps with cover plates and hex bolts and are according to DIN3015-10. Pipe sliding starts when the load values "P" are reached.

Recommended Spacing



Recommended Spacing				
Pipe or Tube OD	Operating Pressure	Recommended Spacing	Operating Pressure	Recommended Spacing
0.250 in. to 0.675 in.	up to 3000 psi	5 - 7 Ft.	over 3000 psi	3 - 5 Ft.
0.750 in. to 1.050 in.	up to 3000 psi	6 - 8 Ft.	over 3000 psi	4 - 6 Ft.
1.125 in. to 1.500 in.	up to 3000 psi	7 - 9 Ft.	over 3000 psi	5 - 7 Ft.
1.750 in. to 2.500 in.	up to 3000 psi	8 - 10 Ft.	over 3000 psi	6 - 8 Ft.
2.750 in. to 3.500 in.	up to 3000 psi	9 - 11 Ft.	over 3000 psi	7 - 9 Ft.
4.000 in. to 4.500 in.	up to 3000 psi	10 - 12 Ft.	over 3000 psi	8 - 10 Ft.
5.563 in. to 6.625 in.	up to 3000 psi	11 - 13 Ft.	over 3000 psi	8 - 11 Ft.
6.625 in. to 8.625 in.	up to 3000 psi	12 - 14 Ft.	over 3000 psi	9 - 11 Ft.
10.750 in. to 12.750 in.	up to 3000 psi	13 - 15 Ft.	over 3000 psi	8 - 10 Ft.
13.750 in. to 19.750 in.	up to 3000 psi	14 - 16 Ft.	over 3000 psi	10 - 12 Ft.

www.behringersystems.com

Recommended Mounting Practices

Bends

Behringer recommends that all pipe bends be supported by clamps placed as close to the bend as possible. The clamps should be directly after the connection (coupler, threaded connector, flange, or other).



Components

Behringer recommends that all system components be supported by clamps directly before and after the component in order to protect against vibrations and shock. The clamps should be located as close to the component as possible.



BEHRINGER[®]

For more information on Behringer Pipe Supports for industrial applications, visit our website:

behringersystems.com

Or call us at +1 (973) 948-0226

Your local stocking distributor:

Behringer Corporation
17 Ridge Road
Branchville, NJ 07826
Tel: +1 (973) 948-0226
Fax: +1 (973) 948-2562
email: sales@behringersystems.com
web: behringersystems.com